

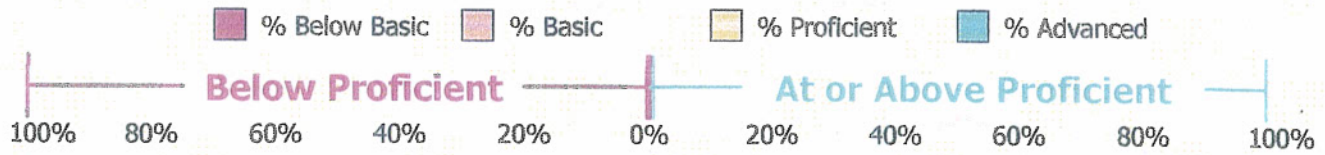
Proficiency Level Display

Iowa Tests of Basic Skills (ITBS)
Form: A
Test Date: 10/04/2010
Norms: Fall 2005

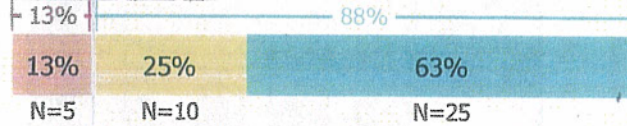
Grade: 2 Level: 7
Building: O L Assumption Cl

System: S G P R
Archdioc Los Angeles Arch

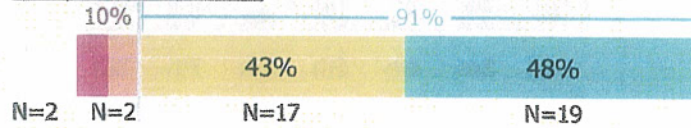
Disaggregation: All Students
Score Type: National Proficiency Levels
Admin. Type: Print



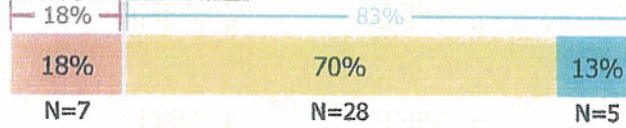
Reading Total



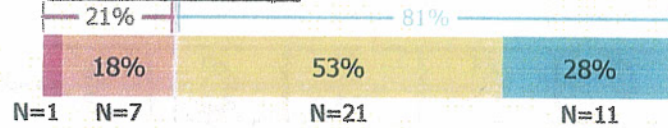
Language



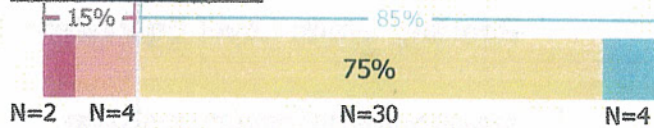
Math Total



Social Studies

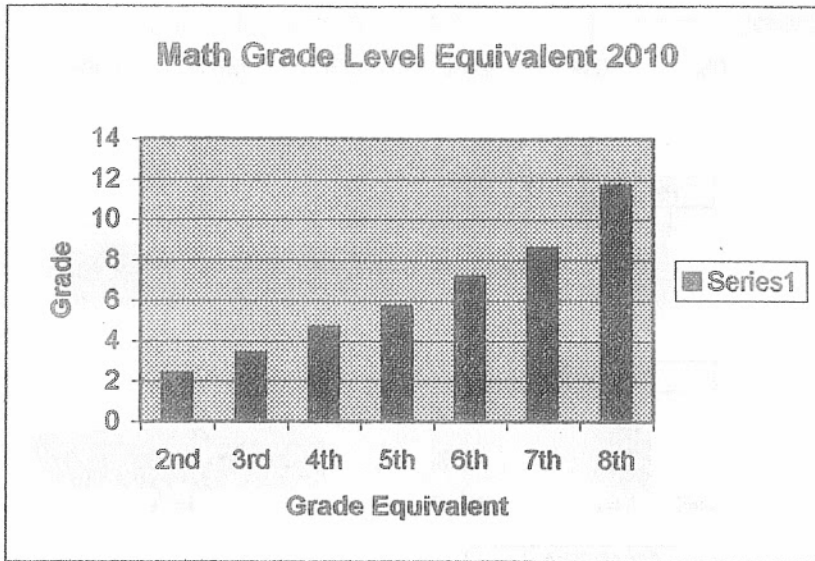


Science

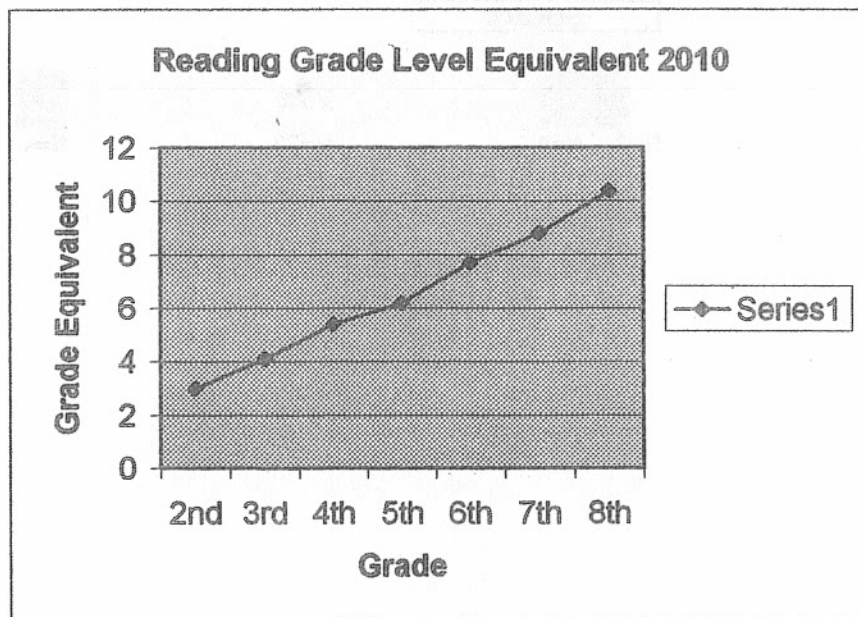


Students coded any number in Column Z are excluded from group averages
Numbers may not sum to 100% due to rounding

Math	2 nd	3 rd	4 th	5 th	6 th	7 th	8 th
2010	2.4	3.4	4.7	5.7	7.2	8.6	11.7



Reading	2 nd	3 rd	4 th	5 th	6 th	7 th	8 th
2010	3	4.1	5.4	6.2	7.7	8.8	10.4



Group Longitudinal Display

Iowa Tests of Basic Skills (ITBS)

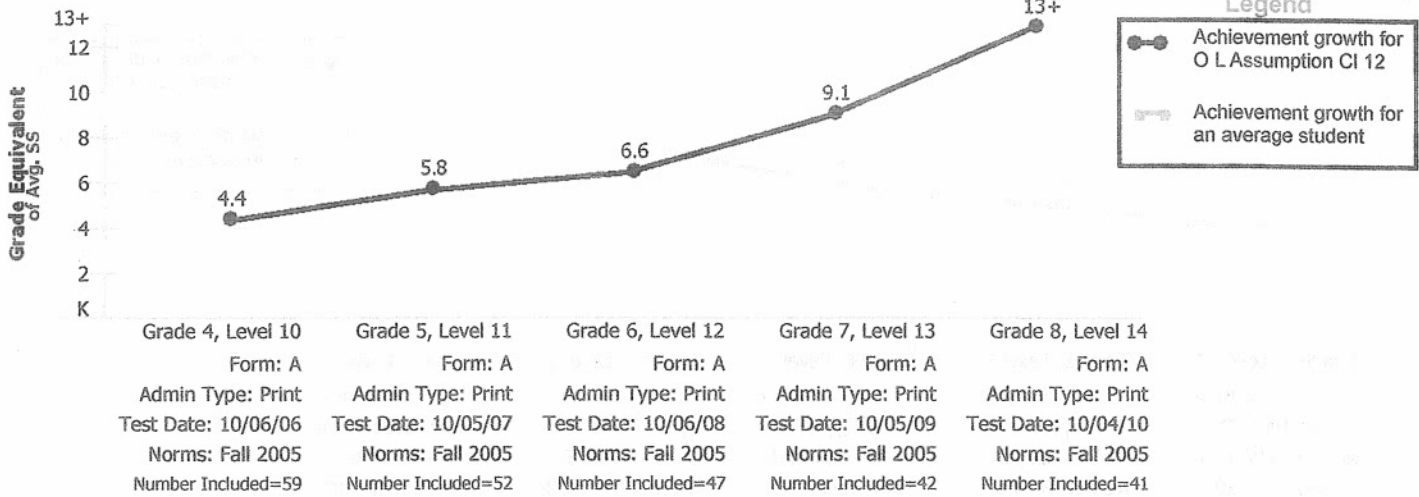
Grade: 8 Level: 14

System: S G P R
Archdioc Los Angeles Arch

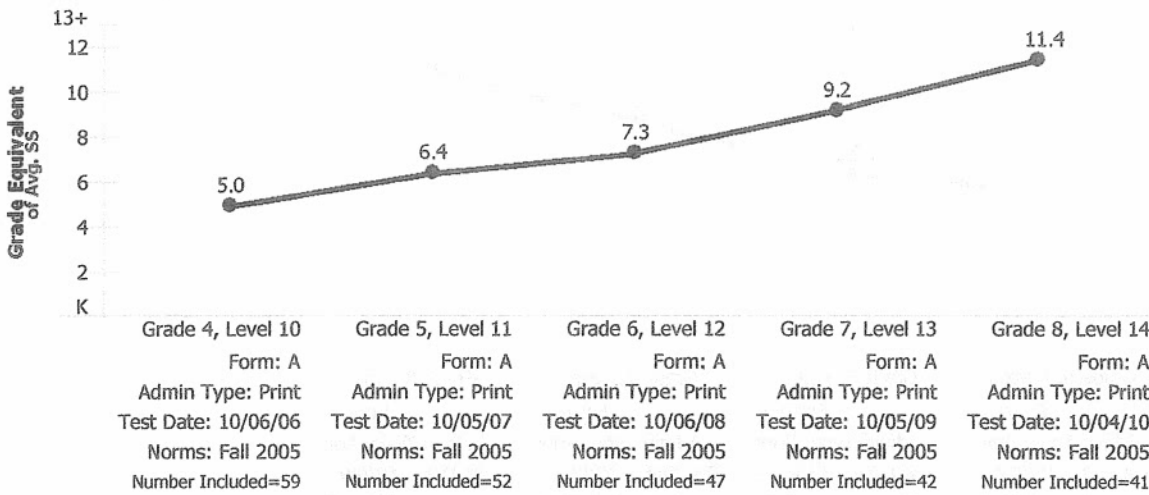
Disaggregation: All Students
Score Type: Grade Equivalent

Building: O L Assumption CI

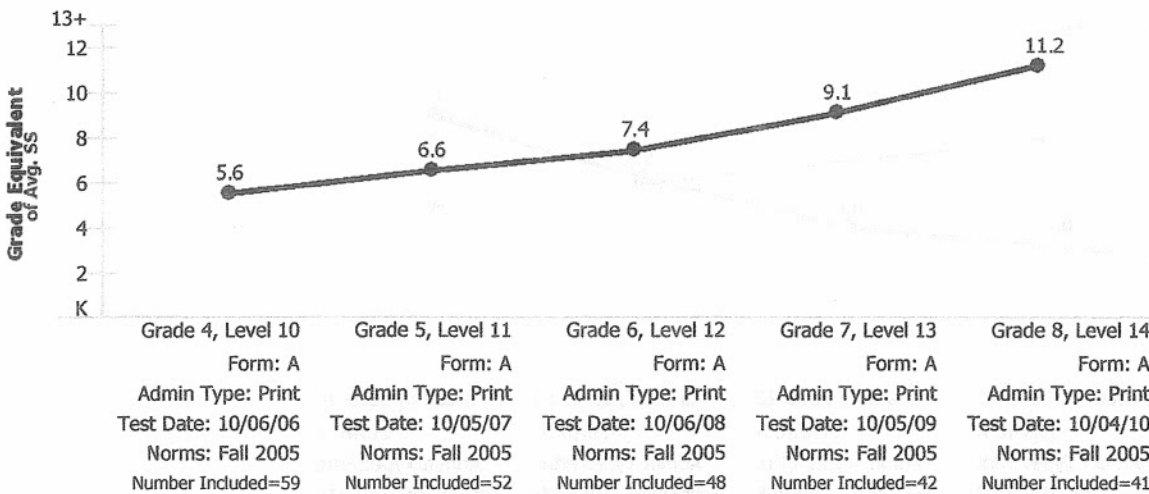
Math Computation



Core Total



Science



Group Longitudinal Display

Iowa Tests of Basic Skills (ITBS)

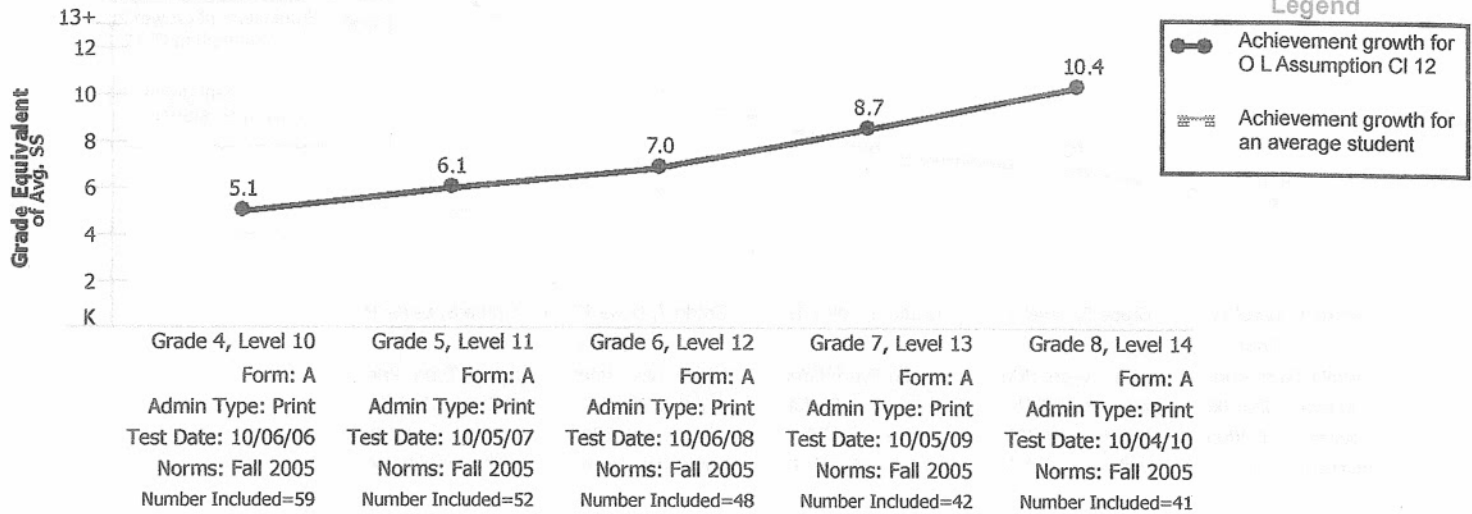
Grade: 8 Level: 14

System: S G P R
Archdioc Los Angeles Arch

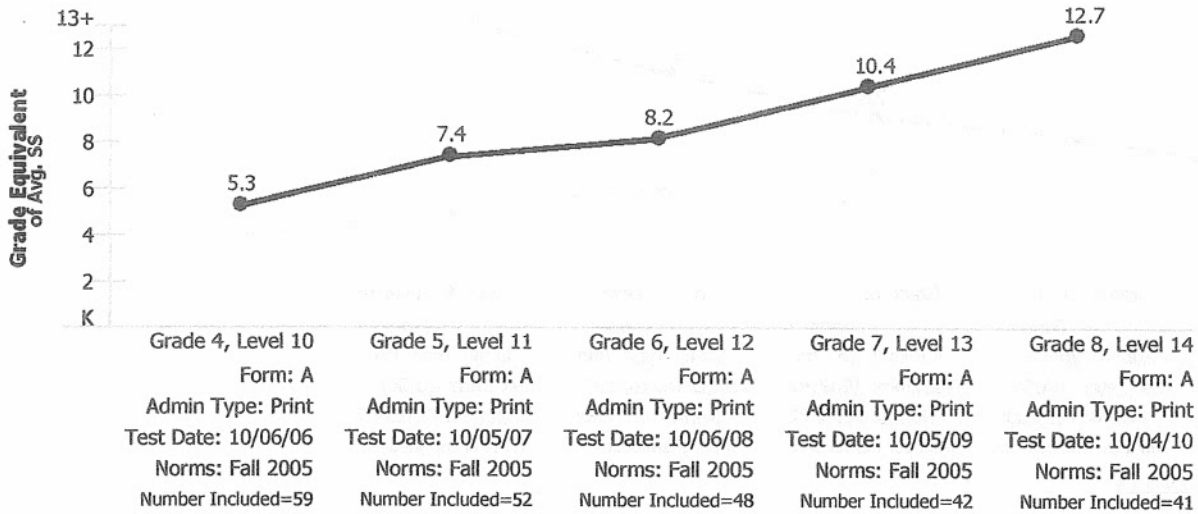
Disaggregation: All Students
Score Type: Grade Equivalent

Building: O L Assumption CI

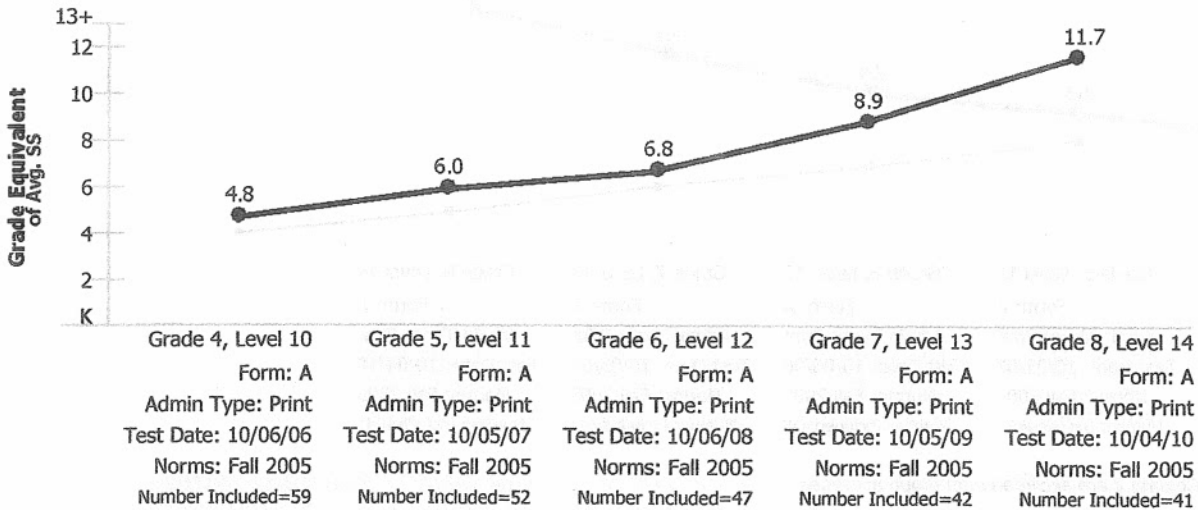
Reading Total



Language Total



Math Total



Improving Student Learning for Catholic Schools

Appendix A-7

Adhere to Diocesan Policy in publishing this appendix
School Profile – Standardized Testing Program (GE, NPR, etc.)

Reading	2nd	3rd	4th	5th	6th	7th	8th
2006	2.6	3.7	5.1	6.3	7.2	8.3	10.0
2007	2.6	3.7	4.9	6.1	7.3	8.5	9.3
2008	2.7	3.7	5.0	5.9	7.0	8.6	9.9
2009	2.6	4.0	4.9	6.6	7.3	8.7	10.3
Current Yr.	3.0	4.1	5.4	6.2	7.7	8.8	10.4

Math	2nd	3rd	4th	5th	6th	7th	8th
2006	2.3	3.4	4.8	6.0	6.5	8.6	10.9
2007	2.1	3.4	4.2	6.0	6.9	8.5	10.7
2008	2.3	3.3	4.5	5.4	6.8	9.2	10.9
2009	2.2	3.5	4.2	6.1	6.6	8.9	11.8
Current Yr.	2.4	3.4	4.7	5.7	7.2	8.6	11.7

Core	2nd	3rd	4th	5th	6th	7th	8th
2006	2.3	3.5	5.0	6.5	7.2	8.7	10.8
2007	2.3	3.5	4.5	6.4	7.5	8.7	10.2
2008	2.5	3.8	4.8	5.9	7.3	8.2	10.5
2009	2.4	3.6	4.6	6.5	7.3	9.2	11.5
Current Yr.	2.6	3.7	5.2	6.2	7.7	8.9	11.4

Social St	2nd	3rd	4th	5th	6th	7th	8th
2006	2.4	4.1	5.6	6.9	7.0	8.8	11.1
2007	2.4	4.2	5.4	6.7	7.7	8.9	10.2
2008	2.5	4.1	5.6	6.2	7.0	9.6	10.6
2009	2.5	4.5	5.5	6.2	7.2	8.7	10.8
Current Yr.	2.6	4.2	6.0	6.4	8.2	8.2	9.4

Science	2nd	3rd	4th	5th	6th	7th	8th
2006	2.5	3.7	5.6	6.6	7.3	9.0	10.4
2007	2.4	3.7	4.9	6.6	7.9	9.2	10.5
2008	2.6	3.6	5.6	6.6	7.4	9.0	10.7
2009	2.3	4.1	5.1	6.9	8.0	9.1	11.7
Current Yr.	2.5	4.1	5.6	6.6	8.5	9.0	11.2

Language	2nd	3rd	4th	5th	6th	7th	8th
2006	2.2	3.5	5.3	7.8	8.1	9.2	11.9
2007	2.3	3.5	4.7	7.4	8.6	9.1	10.7
2008	2.6	3.6	5.2	6.6	8.2	9.9	11.2
2009	2.3	3.9	5.0	7.2	8.2	10.4	12.8
Current Yr.	2.6	3.8	5.5	6.7	8.5	9.6	12.7

Improving Student Learning for Catholic Schools

Appendix B – Data Analysis Templates:

Appendix B-1 Data Analysis – Enrollment Trends

Grade Enrollment Over Time

Year	Preschool	PK	K	1	2	3	4	5	6	7	8
2003			41	42	59	65	67	55	60	65	57
2004			38	50	47	59	66	62	58	59	58
2005			41	61	47	57	63	63	66	49	59
2006			41	55	57	49	59	62	63	66	47
2007			24	51	59	55	42	54	64	54	64
2008			45	33	48	57	51	46	48	63	54
2009			42	45	34	43	57	48	44	42	62
2010			37	44	40	25	43	58	47	42	41

1. As you trace a class diagonally (K-2003, 1-2004, 2-2005, etc.) do you see an enrollment trend? Are students entering or leaving at a specific grade level? What is the cause of this trend? What can the school do to change this trend, if a change is needed? For example, a significant number of students are leaving after 5th grade in order to attend the new public middle school with a brand new computer lab? What must you do to keep these students at your school?

Total Enrollment Over Time

2003	2004	2005	2006	2007	2008	2009	2010
511	497	506	499	469	445	417	379

2. As you look at total school enrollment, what has been the 10-year trend? What has been the most recent 5-year trend? What are the causes of increased or decreased enrollment? What have parents told you in their exit interviews when they leave school?
3. What is the trend in the public school? Is there a similar increase/decrease?
4. What recruitment efforts are you using to attract new students? Knowing that, in most cases, the mother decides what school her child will be attending before the child is 3 years old, what efforts are you making to put the name of your school before these parents?